



TOOL & MANUFACTURING

5005 County Rd. 29 ♦ Auburn, IN 46706  
o: 260.925.2128 w: www.rathburntool.com

### CUSTOMER SOLUTIONS: #23

## QUICK TURN, HIGH QUALITY SOLUTIONS TO HELP A LOCAL MANUFACTURER IN A BIND.

Manufacturing offshore can have some advantages—until issues with shipping, quality, and tariffs get in the way. A local supplier of stainless steel rail components found themselves dealing with critical timing issues. Parts they had ordered overseas had been delayed by two weeks, and they were now completely out of inventory so they could not meet their production demands. Through a mutual connection associated with Citizen Swiss equipment, they learned about Rathburn.

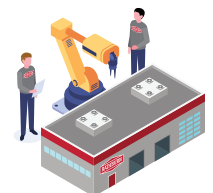
### JUST-IN-TIME PRECISION MANUFACTURING TO OVERCOME OUTSOURCING DELAYS.

After meeting with the customer engineering team, Rathburn acquired the 316 stainless steel stock needed for the project and quickly ramped up production using our Citizen Swiss A32 machine. We were able to turn out the 5,000 parts needed, from start to finish, in just four days.

### HALF THE TIME, WITHIN BUDGET, AND EXACTLY WHAT WAS NEEDED.

Because of our commitment to quality people and low volume production efficiencies, Rathburn was able to jump immediately to solve this manufacturing challenge for our customer. We delivered the pieces in half the time of the customer’s overseas supplier delay at a price competitive with overseas manufacturing, and enabled our customer to meet their customer’s demands right on schedule.

Visit our plant in Auburn, Indiana and see for yourself how for 35+ years, we’ve used the latest technology while applying ingenuity and consistent quality standards to produce an experience our customers call “hard to believe”.





TOOL & MANUFACTURING

5005 County Rd. 29 ♦ Auburn, IN 46706  
o: 260.925.2128 w: www.rathburntool.com

## EQUIPMENT & FACILITIES

### CNC TURNING CENTERS:

#### (1) Hyundai 2 Axis L280

- Maximum Turning Diameter: 16.14"
- Maximum Thru Spindle: 3"

#### (1) Takisawa TCN-2100G L3

- Diameter Thru Spindle: 2"
- Maximum Turning Diameter: 11.81"
- Box Slide Way X Z

#### (2) Takisawa TCN-2600L6

- Diameter Thru Spindle: 2.9"
- Maximum Turning Diameter: 16"
- Box Slide Way X Z

### CNC MILLING CENTERS:

#### (4) Mazak 410A Nexus

- 4th Axis Head Index
- Axis Travel: x = 30" Y = 16" Z = 20"
- SMW 175 4th Axis Rotary Head

#### (3) Brother TC-S2D

- 4th Axis Head Index
- Axis Travel:  
x = 19.7" Y = 15.7" Z = 11.8"
- Independent Full 4th Axis Rotary Head

#### (1) Brother TC-S2D

- Axis Travel:  
x = 19.7" Y = 15.7" Z = 11.8"

### OTHER TECHNOLOGY

#### ROBOTICS:

#### (4) Motoman NX100 Robots

### CUSTOMIZED AUTOMATION:

#### (2) Multispindle Torque Machine

#### (2) Multispindle Drill & Tap with autoload

#### (1) Takisawa TM-4000Y2

- Diameter thru Spindle: 3.7" (3.23" Max. Bar Capacity)
- Maximum Turning Diameter: 10"
- 12-Station Milling Turret, upper & lower
- High Rigid Box Type Slide Way
- LNS Sprint S3 Barfeeder

#### (1) Citizen Swiss Cincom L32 VIII

- 3 Station Modular Tooling Unit
- Live Face 3-front / 3-back
- Low Frequency Vibration
- CAV32-CAV32LE Cincom Magazine Barloader

#### (2) Amera Seiki TC-2L

- Diameter Thru Spindle: 2"
- Maximum Turning Diameter: 13"
- Programmable Tail Stock

#### (1) Brother S700X1

- Axis Travel:  
X=27.5" Y=15.75" Z=11.8"

#### (1) Brother S500X1

- 4th Axis Head Index
- Axis Travel:  
X=19.68" Y=15.75" Z=11.8"

#### (1) Mazak 640M VTC160B

- Axis Travel: X=44" Y=16" Z=22"

#### (1) Hyundai-Kia VX500 Vertical

- 4th Axis Head Index
- Axis Travel: x = 40" Y = 20" Z = 20"

#### (1) Autoload sorting/ Weighting Machine with Auto Paint Marker

#### (1) Autoload Laser Checker For Lathes

### SAWING EQUIPMENT:

#### (2) Hy-Mech H12 Band Saw

- Capacity: 12" x 12" / 12" round

#### (1) Mazak Quick Turn 250 HP

- Diameter Thru Spindle: 3.15"
- Maximum Turning Diameter: 10"
- Maximum Swing: 17.3"
- Maximum Bar Diameter: 2-3/4" (3" w/ bore chuck)

#### (2) Takisawa TC-203J &

#### (2) Takisawa TC-203JG

- Diameter Thru Spindle: 2"
- Maximum Turning Diameter: 11.81"
- Box Slide Way X Z

#### (1) Citizen Swiss A32 VIII PL

- Maximum Turning Diameter: 1-1/4"
- C332 barloader

#### (1) Fadal VMC 2216FX

- 4th Axis Head Index
- Axis Travel: X=30" Y=16" Z=20"
- 8,000 RPM 22 HP

#### (1) Kent KVR-2418

- Axis Travel:  
X=24.01" Y=18.11" Z=18.89"
- Spindle Taper

#### (4) Kitamura 3XD

- 12000 RPM Spindle Speed
- Axis Travel: X=30" Y=30" Z=20"

### METROLOGY:

#### (1) Mitutoyo B-231 Manual CMM

#### (1) Hexagon Global S Green 710.7 DCC CMM