



TOOL & MANUFACTURING

5005 County Rd. 29 ♦ Auburn, IN 46706
o: 260.925.2128 w: www.rathburntool.com

CUSTOMER SOLUTIONS: #17

BECOMING THE PREFERRED OUTSOURCE PROVIDER BY GETTING IT RIGHT THE FIRST TIME.

A local manufacturer had been machining their own parts in-house for a number of years but found market demand for their products outpacing their ability to produce quality parts at the new volume required. The customer needed to find a new partner who could not only meet their quality demands but also ramp up quickly to both address the backlog issues and help the company prepare for a new product launch only six months away.



OUTSOURCING SHOULD BE AS EASY AS IN-HOUSE PRODUCTION.

A key to meeting quality, timing, and pricing challenges is making sure we are aligned from the start. Because we understand the challenges a customer faces when first outsourcing a part, Rathburn made it a priority to sit down with the customer’s Design and Quality Engineer to understand all the key characteristics and fit, form, and function requirements on what turned out to be five initial parts. We identified customer clarifications to the prints and work through mutually agreeable design and manufacturability enhancements even before the first PPAP, and without a price increase.

This allowed Rathburn to get ahead of the desired changes so that PPAP parts were perfect in the first run.

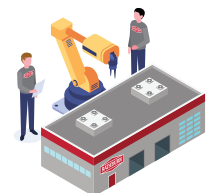
WE MET THE CHALLENGE AND INVESTED IN THE FUTURE.

The Rathburn team committed to getting the items right from the start, which enabled our customer to overcome their backlog and focus on new products.

Our customer was then able to make a seamless transition to outsourcing with Rathburn without a line shutdown or quality distractions.

Due to the success of the relationship, Rathburn invested in new Citizen Swiss equipment and technology to deliver even more complex components and to meet increased demand for this customer in the future.

Visit our plant in Auburn, Indiana and see for yourself how for 35+ years, we’ve used the latest technology while applying ingenuity and consistent quality standards to produce an experience our customers call “hard to believe”.





TOOL & MANUFACTURING

5005 County Rd. 29 ♦ Auburn, IN 46706
o: 260.925.2128 w: www.rathburntool.com

EQUIPMENT & FACILITIES

CNC TURNING CENTERS:

(1) Hyundai 2 Axis L280

- Maximum Turning Diameter: 16.14"
- Maximum Thru Spindle: 3"

(1) Takisawa TCN-2100G L3

- Diameter Thru Spindle: 2"
- Maximum Turning Diameter: 11.81"
- Box Slide Way X Z

(2) Takisawa TCN-2600L6

- Diameter Thru Spindle: 2.9"
- Maximum Turning Diameter: 16"
- Box Slide Way X Z

CNC MILLING CENTERS:

(4) Mazak 410A Nexus

- 4th Axis Head Index
- Axis Travel: x = 30" Y = 16" Z = 20"
- SMW 175 4th Axis Rotary Head

(3) Brother TC-S2D

- 4th Axis Head Index
- Axis Travel:
x = 19.7" Y = 15.7" Z = 11.8"
- Independent Full 4th Axis Rotary Head

(1) Brother TC-S2D

- Axis Travel:
x = 19.7" Y = 15.7" Z = 11.8"

OTHER TECHNOLOGY

ROBOTICS:

(4) Motoman NX100 Robots

CUSTOMIZED AUTOMATION:

(2) Multispindle Torque Machine

(2) Multispindle Drill & Tap with autoloader

(1) Takisawa TM-4000Y2

- Diameter thru Spindle: 3.7" (3.23" Max. Bar Capacity)
- Maximum Turning Diameter: 10"
- 12-Station Milling Turret, upper & lower
- High Rigid Box Type Slide Way
- LNS Sprint S3 Barfeeder

(1) Citizen Swiss Cincom L32 VIII

- 3 Station Modular Tooling Unit
- Live Face 3-front / 3-back
- Low Frequency Vibration
- CAV32-CAV32LE Cincom Magazine Barloader

(2) Amera Seiki TC-2L

- Diameter Thru Spindle: 2"
- Maximum Turning Diameter: 13"
- Programmable Tail Stock

(1) Brother S700X1

- Axis Travel:
X=27.5" Y=15.75" Z=11.8"

(1) Brother S500X1

- 4th Axis Head Index
- Axis Travel:
X=19.68" Y=15.75" Z=11.8"

(1) Mazak 640M VTC160B

- Axis Travel: X=44" Y=16" Z=22"

(1) Hyundai-Kia VX500 Vertical

- 4th Axis Head Index
- Axis Travel: x = 40" Y = 20" Z = 20"

(1) Autoloader sorting/ Weighting Machine with Auto Paint Marker

(1) Autoloader Laser Checker For Lathes

SAWING EQUIPMENT:

(2) Hy-Mech H12 Band Saw

- Capacity: 12" x 12" / 12" round

(1) Mazak Quick Turn 250 HP

- Diameter Thru Spindle: 3.15"
- Maximum Turning Diameter: 10"
- Maximum Swing: 17.3"
- Maximum Bar Diameter: 2-3/4" (3" w/ bore chuck)

(2) Takisawa TC-203J &

(2) Takisawa TC-203JG

- Diameter Thru Spindle: 2"
- Maximum Turning Diameter: 11.81"
- Box Slide Way X Z

(1) Citizen Swiss A32 VIII PL

- Maximum Turning Diameter: 1-1/4"
- C332 barloader

(1) Fadal VMC 2216FX

- 4th Axis Head Index
- Axis Travel: X=30" Y=16" Z=20"
- 8,000 RPM 22 HP

(1) Kent KVR-2418

- Axis Travel:
X=24.01" Y=18.11" Z=18.89"
- Spindle Taper

(4) Kitamura 3XD

- 12000 RPM Spindle Speed
- Axis Travel: X=30" Y=30" Z=20"

METROLOGY:

(1) Mitutoyo B-231 Manual CMM

(1) Hexagon Global S Green 710.7 DCC CMM